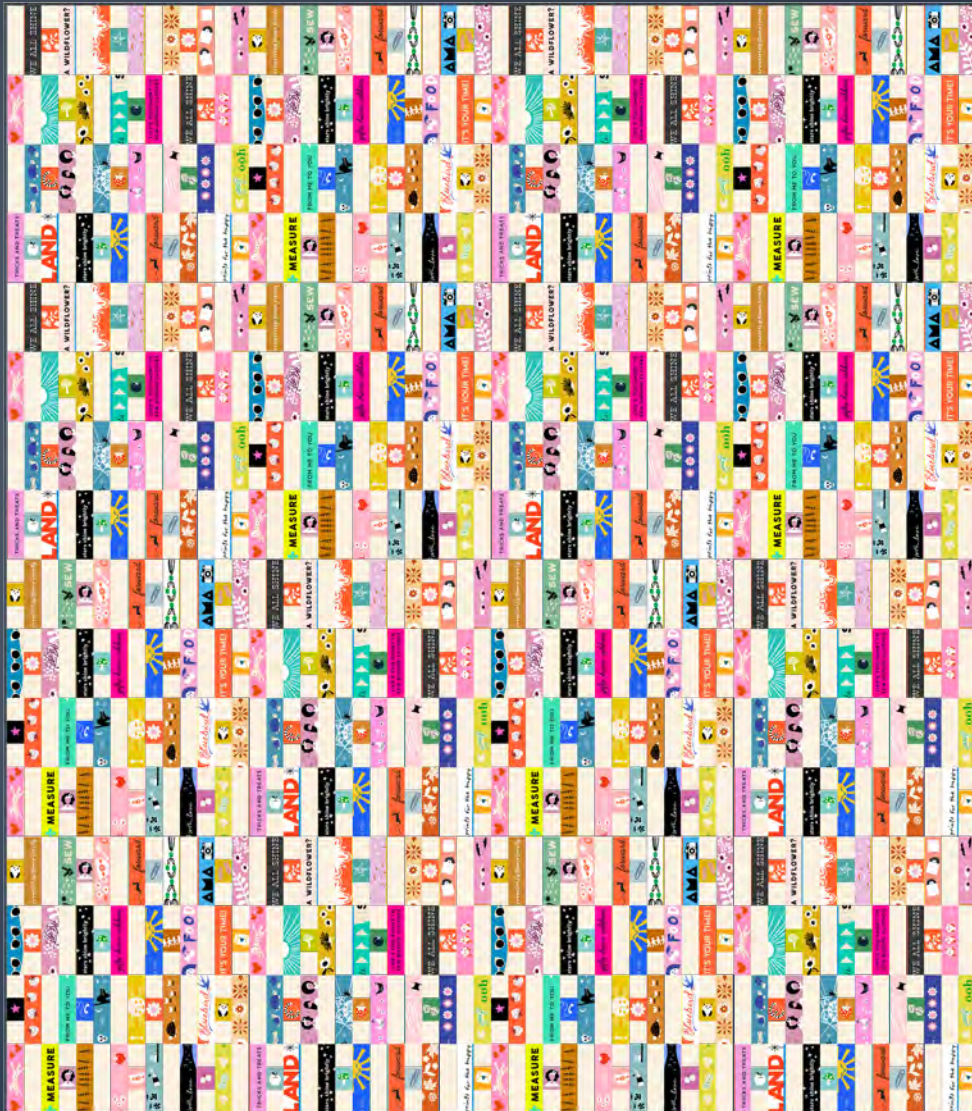


★ OFFICIAL ★
RUBY STAR
SOCIETY
PATTERN CO.

SWAP TALK QUILT

project sheet



PATTERN BY ALEXIA MARCELLE ABEGG

SUPPLIES

Fabric for piecing the baby quilt or throw sized quilt top and binding.
***NOTE - yardage below does not allow much room for error.

Baby
42"x 48"



RS5179 11
one panel



RS5181 11
one panel

BLOCK BACKGROUND



RS5027 90
1 3/4 yds

BINDING



RS5027 102
1/2 yds

BACKING

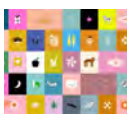


RS5179 11
3 1/4 yds

Throw
66"x 72"

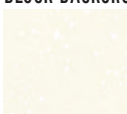


RS5179 11
two panels



RS5181 11
one panel

BLOCK BACKGROUND



RS5027 90
3 3/4 yds

BINDING



RS5027 102
1/2 yds

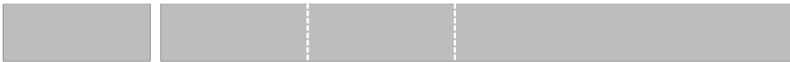
BACKING



RS5179 11
4 1/2 yds

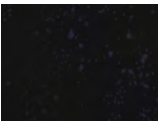
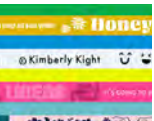
CUTTING

For each of the selvedge panel and block background fabrics you will cut your fabric into the given measurements below by the width of fabric (WOF) strips. Sub cut the strips into the required sizes listed in the chart below.



CUT INTO LONG STRIPS THEN SUB-CUT

FABRIC	CUTTING INSTRUCTIONS	SUBCUT
	Cut panel into 1 1/4" tall x WOF strips & Cut into 3 1/2" sections*	BABY: 448 1 1/4" x 3 1/2" pieces THROW: 1056 1 1/4" x 3 1/2" pieces
	Cut panel into 1 1/2"h x 1 1/4"w pieces*	BABY: 224 motif rectangles THROW: 528 motif rectangles
	Cut into 3 1/2" by WOF strips & Cut into 3 1/2" h x 1 1/4" w pieces	BABY: 7 strips cut into 224 3 1/2" x 1 1/4" pieces THROW: 16 strips cut into 528 3 1/2" x 1 1/4" pieces
	Cut into 1 1/2" h by WOF strips and then cut into 1 1/2" h x 1 1/4" w pieces	BABY: 14 strips cut into 448 1 1/2" x 1 1/4" pieces THROW: 32 strips cut into 1056 1 1/2" x 1 1/4" pieces

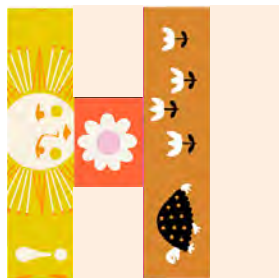


Cut backing and binding as desired.

* FUSSY CUT THESE PIECES, CENTERING THE MOTIFS AND DESIGNS AS DESIRED

QUILT TOP INSTRUCTIONS

1/4" Seam Allowance

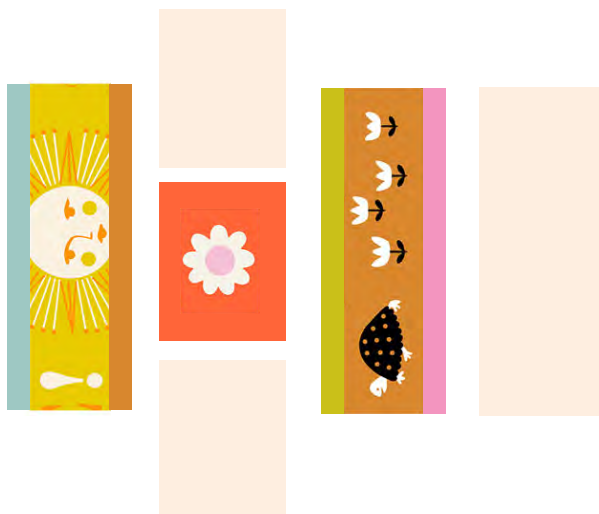


Swap Talk Block

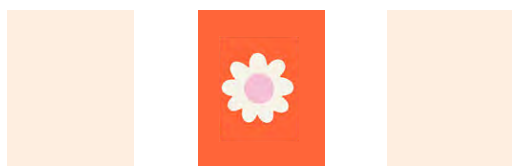
1. Assemble most of the blocks required, save the remaining pieces for step 5.

BABY: complete 208 of the 224 blocks THROW: complete 504 of the 528 blocks.

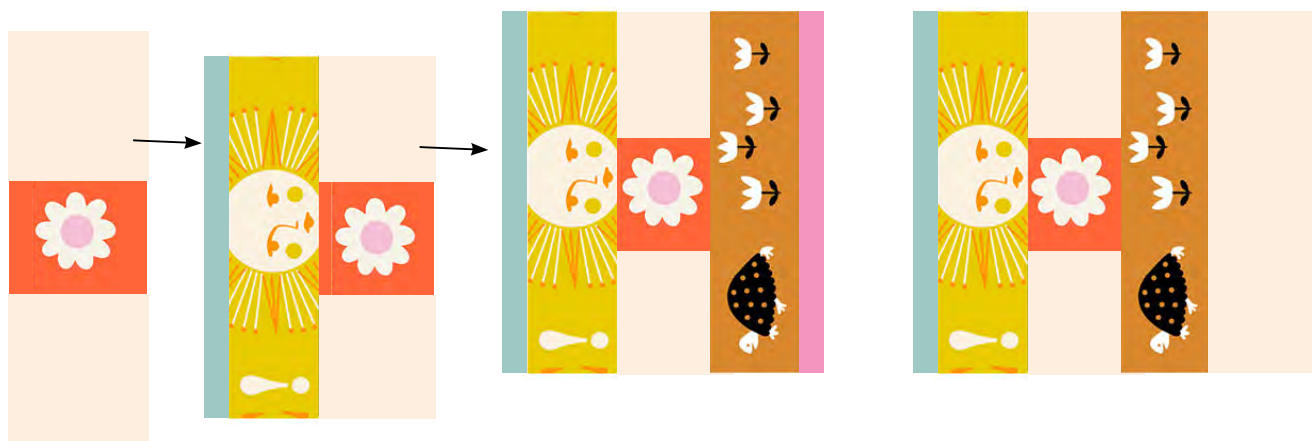
For each you will need **(1)** 1 1/4" x 3 1/2" background fabric strip and **(2)** 1 1/2" x 1 1/4" background fabric strips, **(2)** 1 1/4" x 3 1/2" selvedge strips, **(1)** motif rectangle 1 1/2" x 1 1/4".



2. Follow the piecing diagram at right and assemble the QTY of blocks listed above. Start with the center motif rectangle and the block background rectangles. Press after sewing each seam.

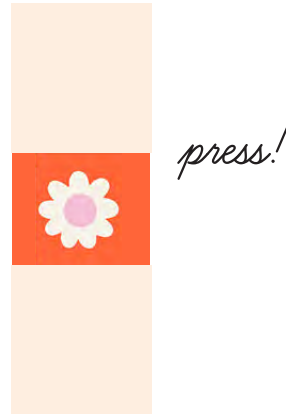


sew each block



3. Add a sashing background fabric rectangle to the right hand side of each of your completed blocks.

4. With the remaining pieces sew each center motif rectangle to two background fabric rectangles and press.



5. Assemble each row of your quilt so that the blocks in the rows are offset in the final quilt layout there are four row variations.

For baby quilt, sew twelve rows of 13 blocks each, and four rows of 14 blocks as shown below.

**BABY
ROW A**



For throw quilt, sew eighteen rows of 21 blocks each, and six rows of 22 blocks as shown.

**THROW
ROW A**



Next, complete the rows that need added piecing, for the baby quilt you will need 12 rows containing 13 blocks and all of the extra pieces to proceed.

For the throw quilt you will need 18 rows containing 21 blocks and all of the extra pieces to proceed.

6. For Row B variation you will add a sashing strip to the left end of the row and a whole block without sashing to the right end of row.
BABY: make 4 rows this way THROW: quilt make 8.

add sashing to left



add selvedge, pieced motif component, and selvedge to right side

7. For the Row C variation you will add a motif rectangle component from step 4, a selvedge strip, and a sashing strip to the left end of the row and a selvedge strip to the right end of row. BABY: make 4 rows this way THROW: quilt make 4.

add to left



add selvedge to right side

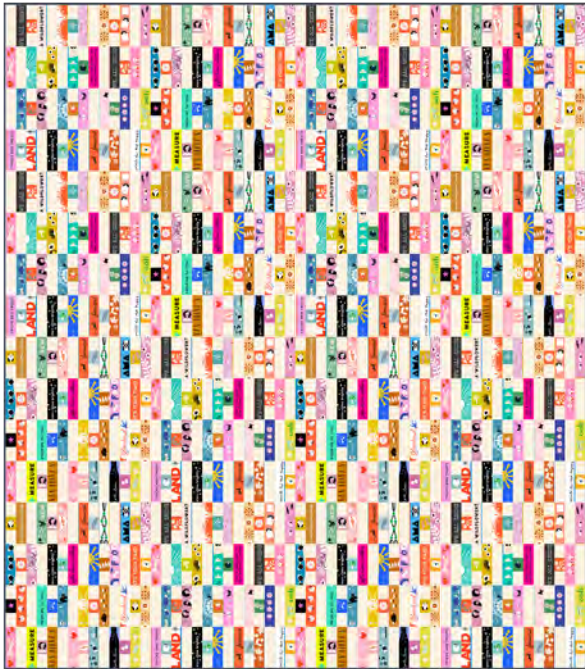
8. For Row D, the final row variation, you will add a selvedge strip, and a sashing strip to the left end of the row and a selvedge strip and motif rectangle component from step 4 to the right end of row. Baby quilt- make 4 rows this way, throw quilt make 6.

add to left



*add selvedge
and motif
piece to right*

baby



9. Sew the rows of your quilt together!

For the baby quilt from top to bottom the layout order is

BDBABDBACACDCACD

for the throw quilt, the layout order is

BDBABDBACACDCACDBDBABDBA

throw



*sew the rows
together!*

**YOU DID IT! YOU MADE A SWAP
TALK QUILT!!**

Be sure to use #rubystarsociety and
#swaptalkquilt when sharing your
creations so we can see them!

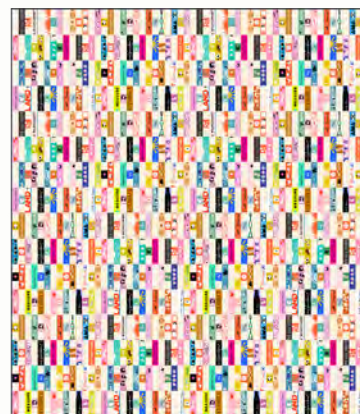
 @alexiamarcelleabegg
@rubystarsociety

★ RUBY STAR ★
SOCIETY

moda
FABRICS + SUPPLIES

SWAP TALK QUILT

This simple to sew quilt designed by Alexia uses the Ruby Star Society collaborative Selvedge Magic collection. Easy piecing and fun fussy cutting give this project it's spark. The colorful blocks are also great for swapping with friends and quilt bee groups. A great quilt to sew in bite sized pieces.

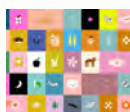


FABRIC REQUIREMENTS

Baby
42"x 48"



RS5179 11
one panel



RS5181 11
one panel

BLOCK BACKGROUND



RS5027 90
1 3/4 yds

BINDING



RS5027 102
1/2 yds

BACKING

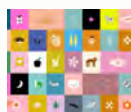


RS5179 11
3 1/4 yds

Throw
66"x 72"



RS5179 11
two panels



RS5181 11
one panel

BLOCK BACKGROUND



RS5027 90
3 3/4 yds

BINDING



RS5027 102
1/2 yds

BACKING



RS5179 11
4 1/2 yds

★ RUBY STAR
SOCIETY ★

moda
FABRICS + SUPPLIES

Copyright 2023 Alexia Abegg. Copying or otherwise redistributing is strictly prohibited. For personal use only.